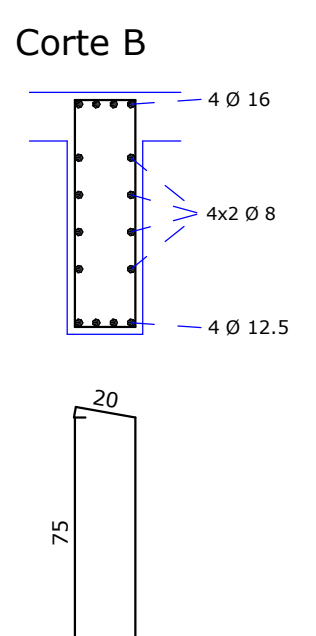
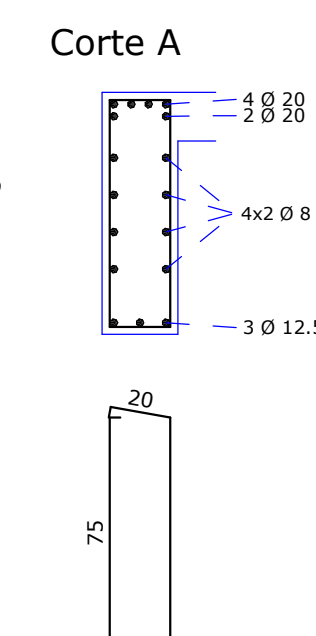


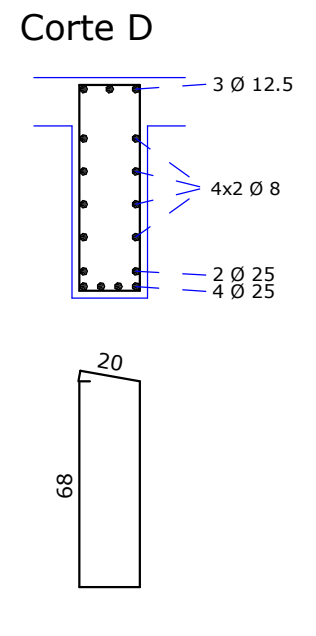
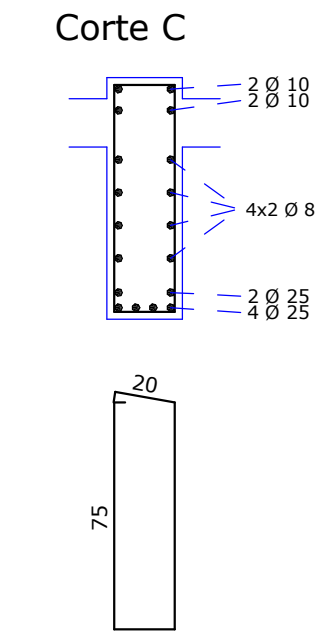
## 25X80



50A	1	20	2	890	1780
50A	2	8	4	530	2120
50A	3	925	2	370	925
50A	4	8	2	370	740
50A	5	16	3	370	640
50A	6	8	2	300	600
50A	7	2	2	575	1150
50A	8	40	4	176	440
50A	9	10	2	280	560
50A	10	20	4	610	2440
50A	11	12.5	5	370	1850
50A	12	10	3	390	780
50A	13	25.5	3	210	615
50A	14	12	3	540	1350
50A	15	12.5	4	1000	4000
50A	16	20	3	850	2550
50A	17	20	7	900	6300
50A	18	16	2	860	1720
50A	19	16	10	525	2100
50A	20	12.5	6	185	1110
50A	21	21	10	1825	18250
50A	22	25	4	640	2560
50A	23	10	2	960	1920
50A	24	6.3	106	206	21836
50A	25	8	96	208	19968
50A	26	6.3	18	192	12864
50A	27	8	8	365	2920
50A	28	8	16	625	6250
50A	29	8	8	440	3520
50A	30	8	16	840	13440
50A	31	8	8	840	6720

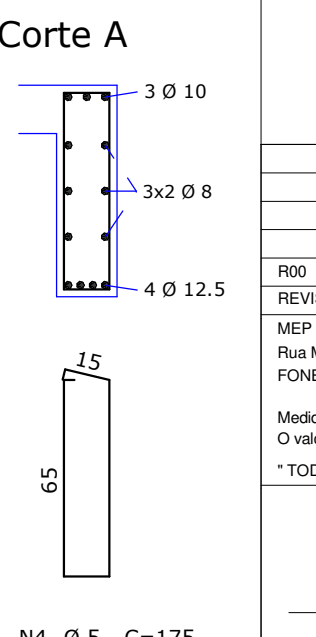
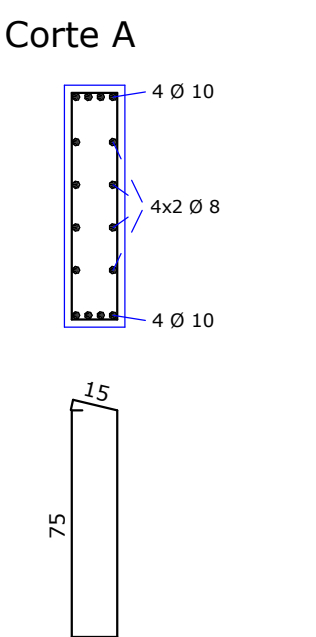
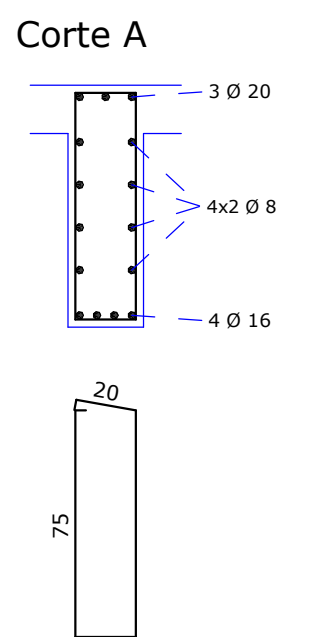
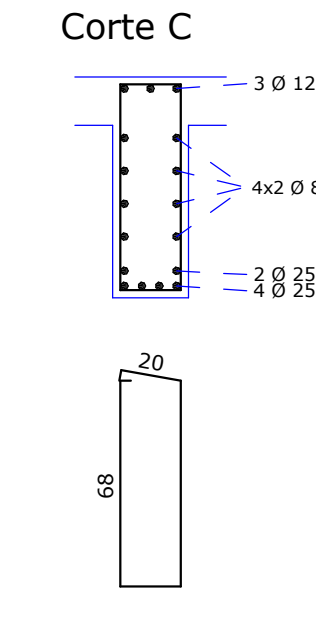
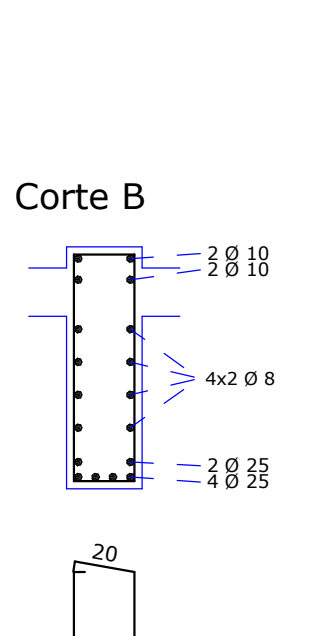
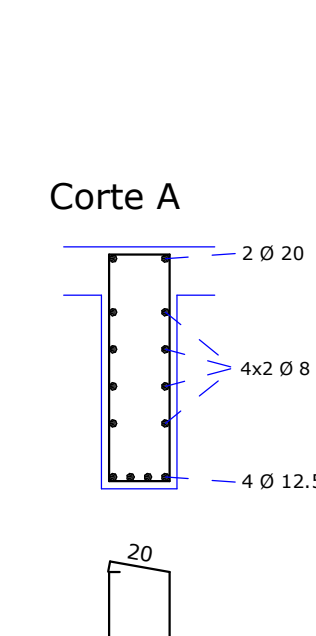
V512B	50A	34	8	8	840	6720
	50A	1	6.3	4	300	1200
	50A	2	16	4	330	1320
	50A	3	20	3	860	2580
	50A	4	16	3	260	780
	50A	5	16	4	800	3200
	50A	6	10	4	340	1360
	50A	7	16	4	785	3140
	50A	8	6.3	81	206	16686
	50A	9	8	16	200	11200

## 25X80



RESUMO DE AÇO			
AÇO	BIT	COMPR	PESO
	mm	m	kgf
60B	5	579	89
50A	6,3	783	192
50A	8	1683	665
50A	10	190	117
50A	12,5	174	167
50A	16	285	450
50A	20	351	865
50A	25	143	551
Peso Total	60B =		89 knf

## 20X80



1. UNIDADES EM CENTÍMETROS, NÍVEIS EM METROS, EXCETO ONDE INDICADO O CONTRÁRIO;
2. ESTE PROJETO ATENDE AS ESPECIFICAÇÕES DA NORMA NBR-6118:2014;
3. AS ARMADURAS DEVEM ESTAR LIMPAS, DE ACORDO COM O QUE SE ESTABELEÇA NAS NORMAS DE EXECUÇÃO COM AS FERRAGENS DEVIDAMENTE POSICIONADAS CONFORME INDICA O PROJETO, UTILIZANDO-SE DE CUSCULOS E ANCAIS DE ADEQUADOS ADEQUADOS, GARANTINDO OS COBRIMENTOS;
4. ACOS: C50 (F<sub>yk</sub> > 50MPa) / C60 (F<sub>yk</sub> > 60MPa);
5. PREVER INSERIR METÁLICOS PARA FIXAÇÃO DA ESTRUTURA METÁLICA, NOS ELEMENTOS PERTINENTES (VER PROJETO DE ESTRUTURA METÁLICA);
6. DEMAIS CONSIDERAÇÕES VIDE FRANCHA DE FORMAS;
7. TODAS AS MEDIDAS E DIMENSÕES DEVEM SER CONFERIDAS NA OBRA.

PLANTA CHAVE